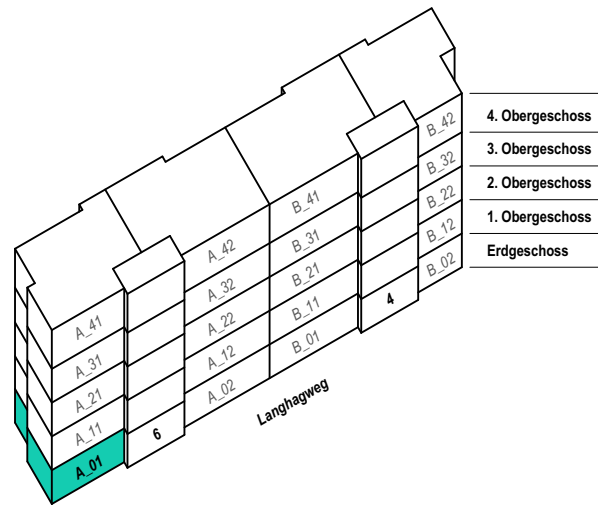



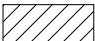

# 4 Zimmer-Wohnung EG A\_01

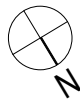
95.5m<sup>2</sup> + Balkon 7.2m<sup>2</sup>



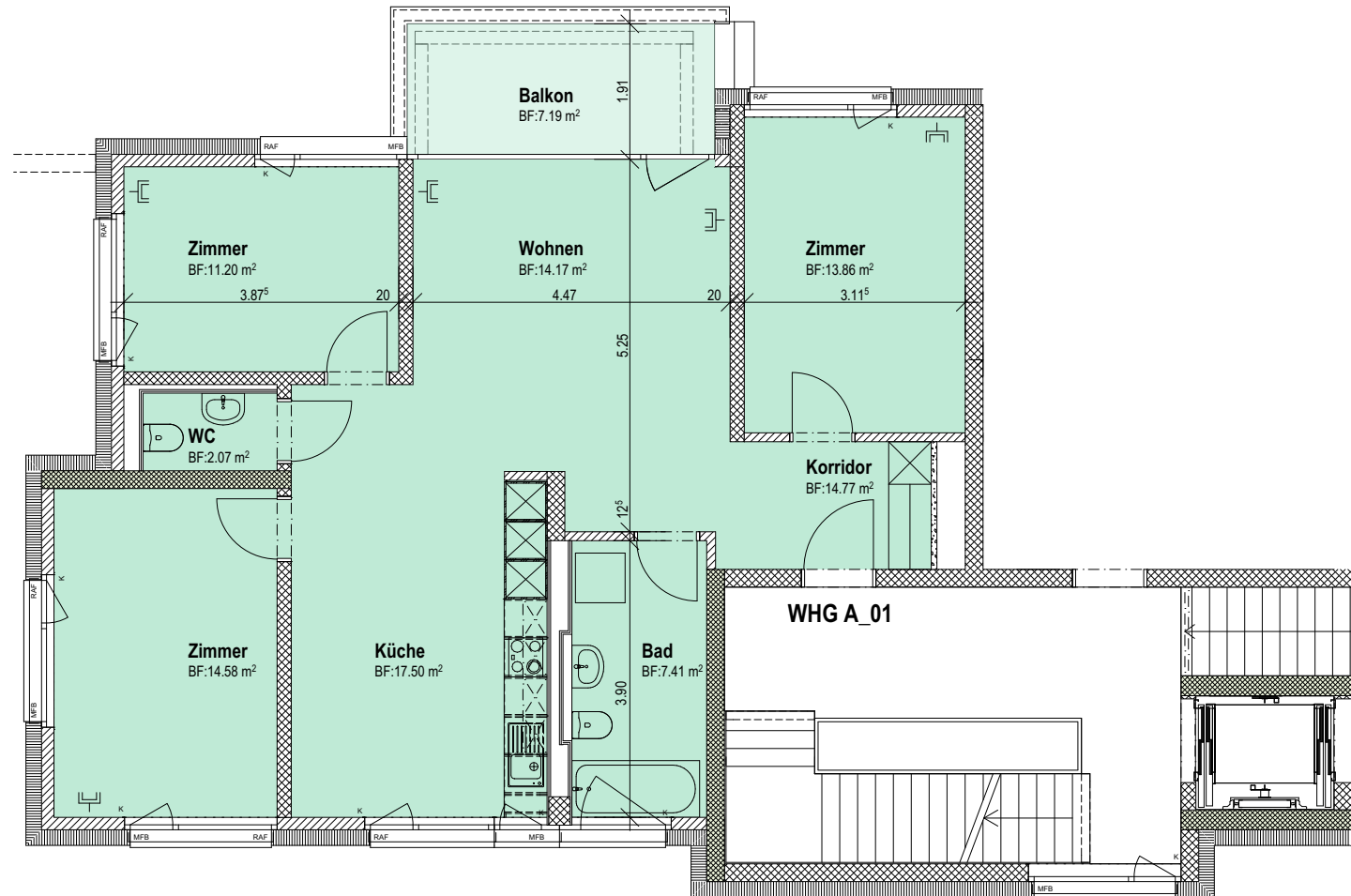
Gemeinnützige Baugenossenschaft Limmattal



-  Beton
-  Backstein
-  Multimediadose



Kleinere Änderungen bleiben vorbehalten  
Die farblich angelegte Fläche entspricht den m<sup>2</sup>-Angaben



## Langhagweg 4+6

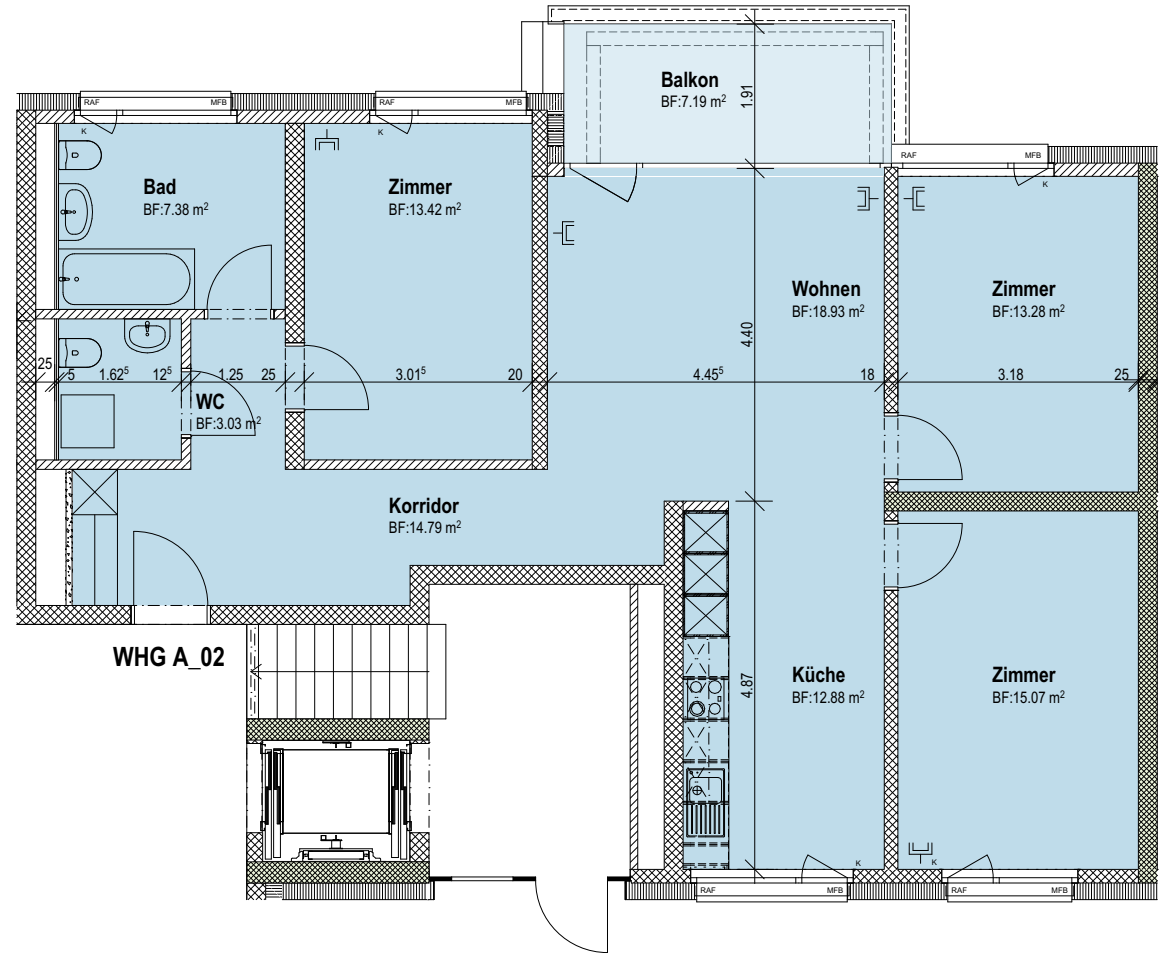
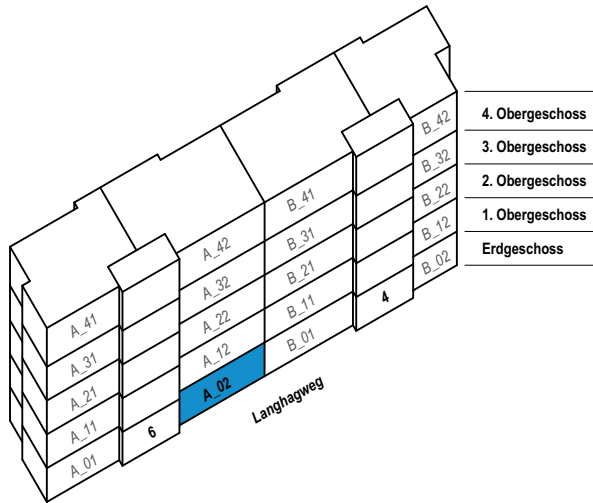
8047 Zürich

# 4 Zimmer-Wohnung EG A\_02

98.7m<sup>2</sup> + Balkon 7.2m<sup>2</sup>



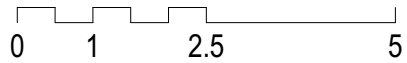
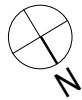
Gemeinnützige Baugenossenschaft Limmattal



Beton

Backstein

Multimediadose



Kleinere Änderungen bleiben vorbehalten  
Die farblich angelegte Fläche entspricht den m<sup>2</sup>-Angaben

## Langhagweg 4+6

8047 Zürich

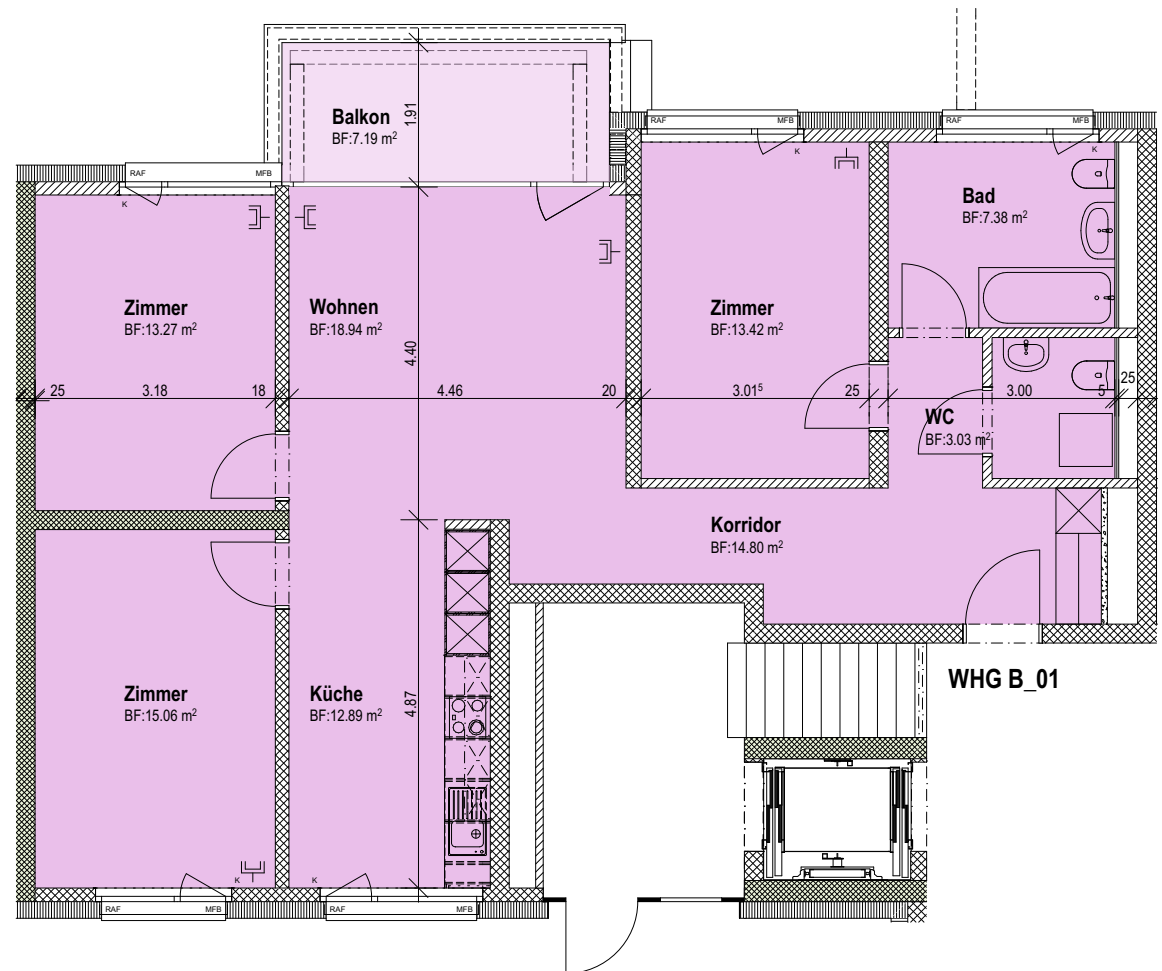
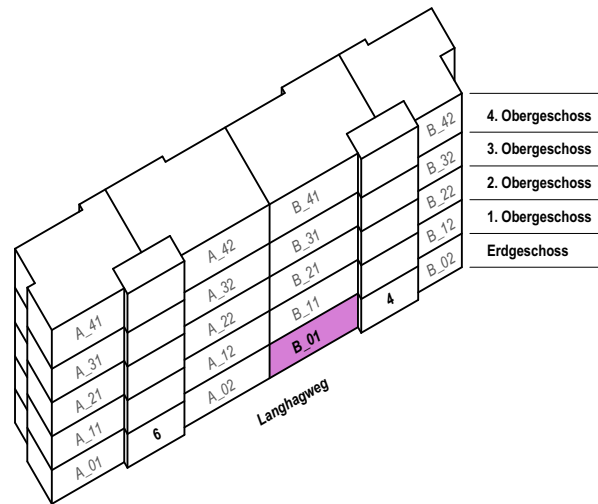
**primobau**  
beraten · planen · bauen

# 4 Zimmer-Wohnung EG B\_01

98.7m<sup>2</sup> + Balkon 7.2m<sup>2</sup>



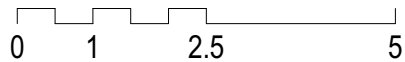
Gemeinnützige Baugenossenschaft Limmattal



Beton

Backstein

Multimediadose



Kleinere Änderungen bleiben vorbehalten  
Die farblich angelegte Fläche entspricht den m<sup>2</sup>-Angaben

## Langhagweg 4+6

8047 Zürich

**primobau**  
beraten · planen · bauen

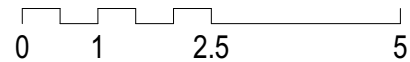
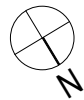
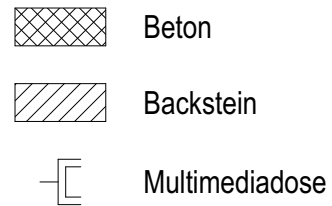
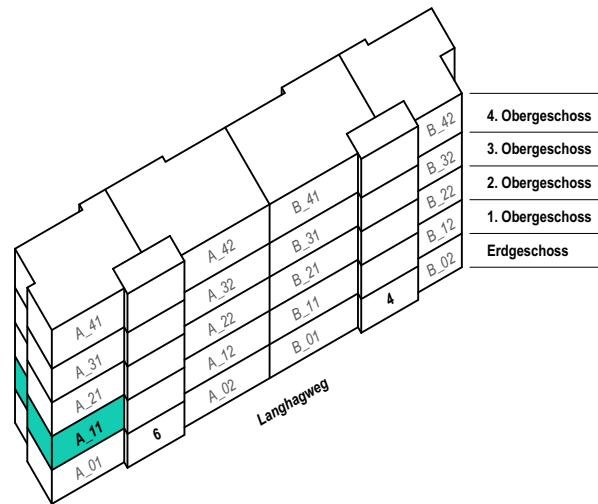


# 4 Zimmer-Wohnung 1.OG A\_11

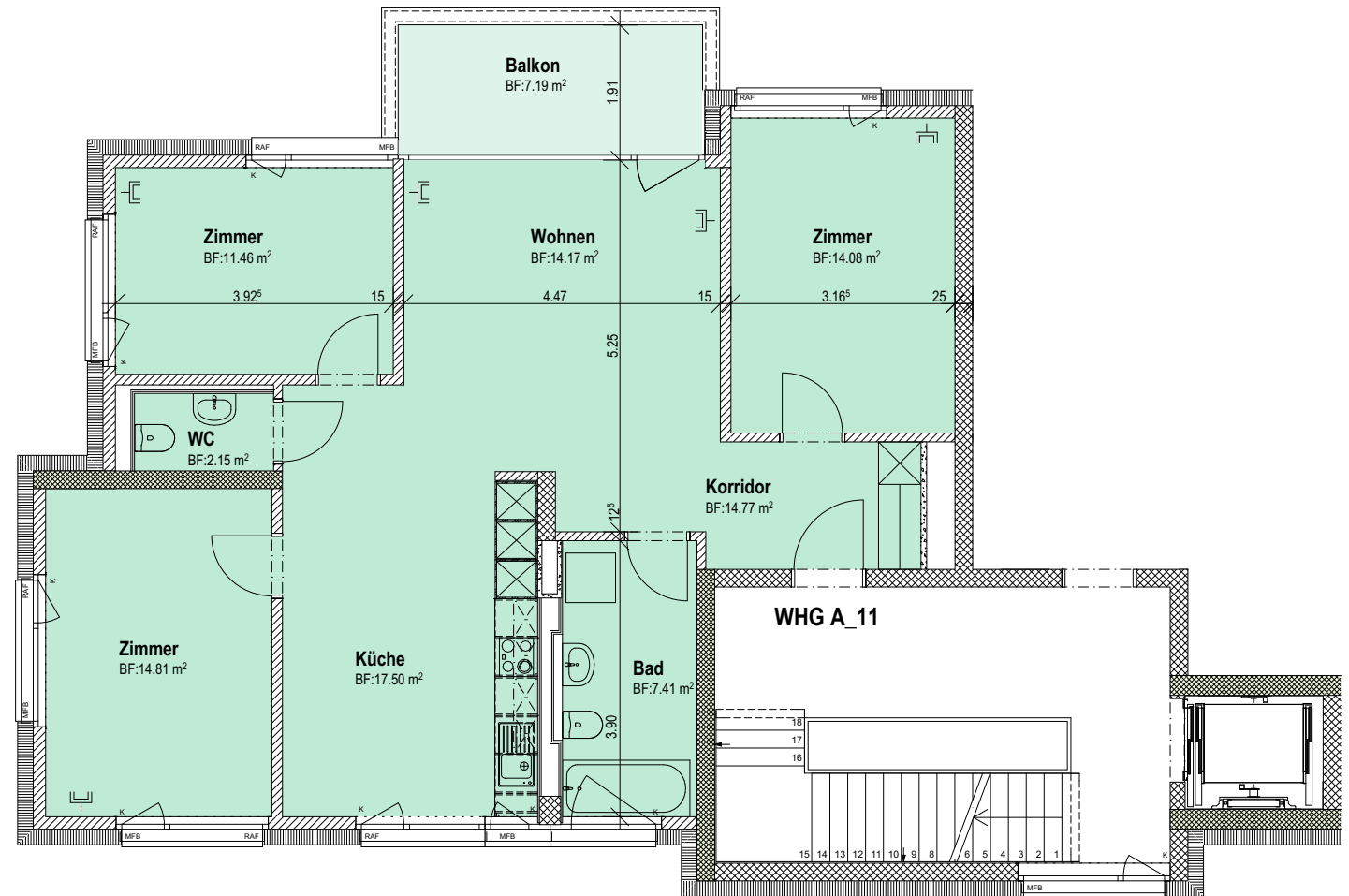
96.3m<sup>2</sup> + Balkon 7.2m<sup>2</sup>



Gemeinnützige Baugenossenschaft Limmattal



Kleinere Änderungen bleiben vorbehalten  
Die farblich angelegte Fläche entspricht den m<sup>2</sup>-Angaben



## Langhagweg 4+6

8047 Zürich

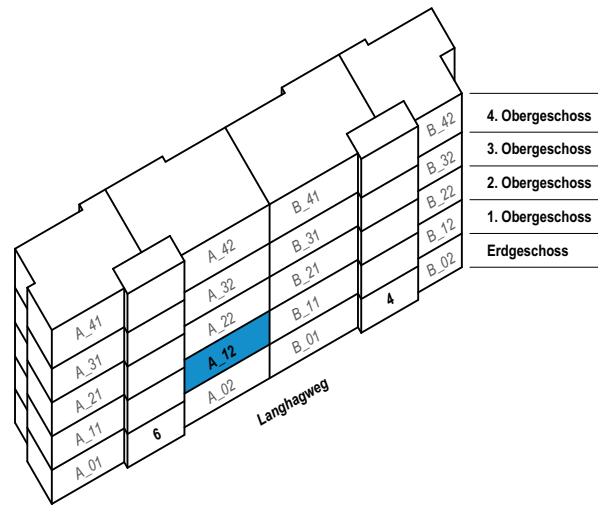
**primobau**  
beraten · planen · bauen

# 5 Zimmer-Wohnung 1.OG A\_12

114.8m<sup>2</sup> + Balkon 7.2m<sup>2</sup>



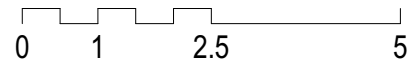
Gemeinnützige Baugenossenschaft Limmattal



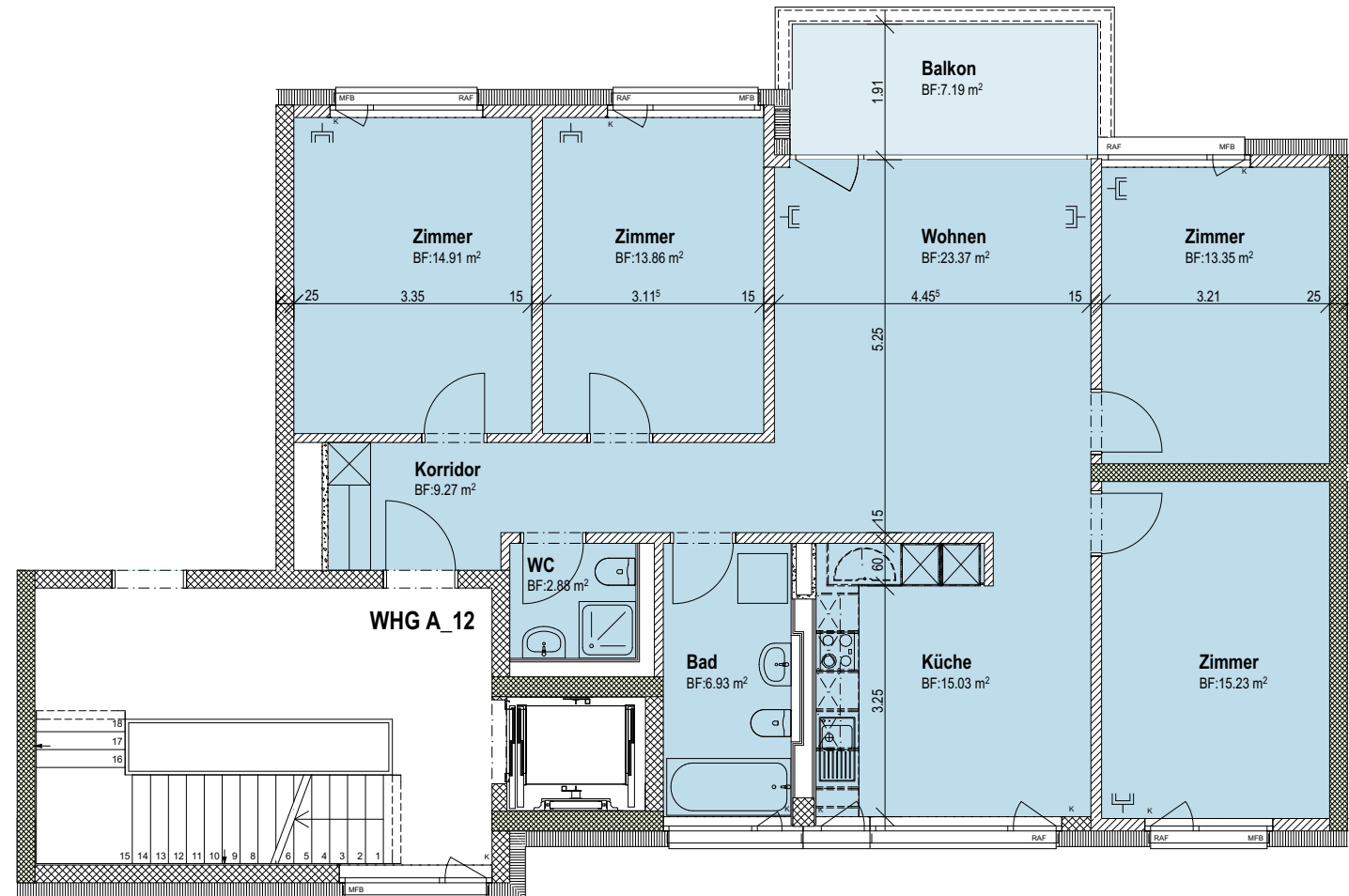
Beton

Backstein

Multimediadose



Kleinere Änderungen bleiben vorbehalten  
Die farblich angelegte Fläche entspricht den m<sup>2</sup>-Angaben



## Langhagweg 4+6

8047 Zürich

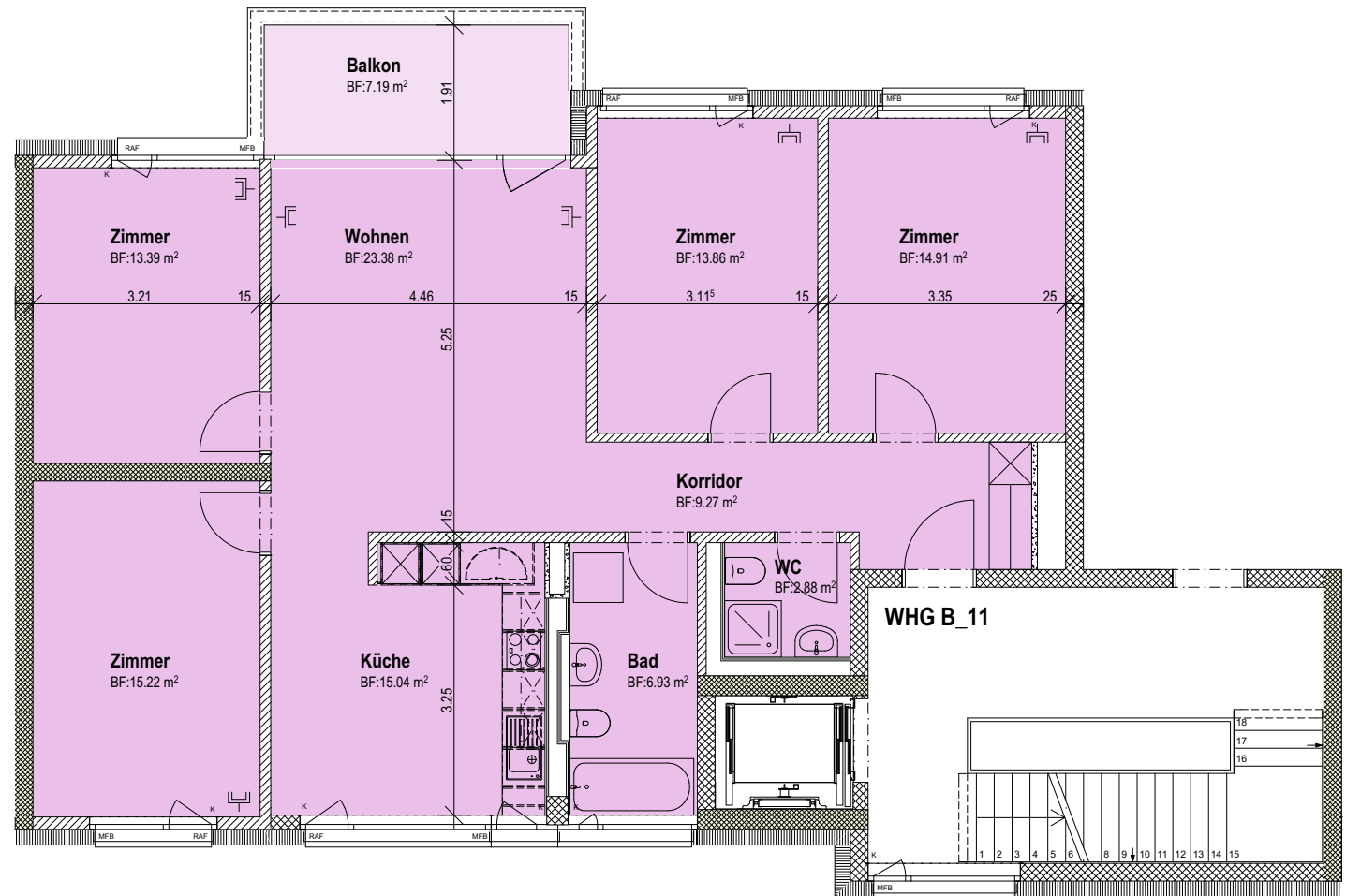
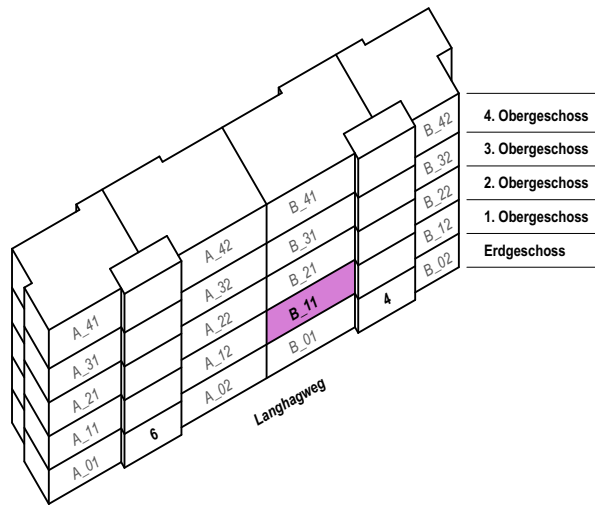
**primobau**  
beraten · planen · bauen

# 5 Zimmer-Wohnung 1.OG B\_11

114.8m<sup>2</sup> + Balkon 7.2m<sup>2</sup>



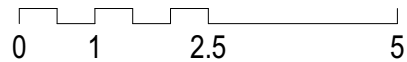
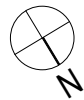
Gemeinnützige Baugenossenschaft Limmattal



Beton

Backstein

Multimediadose



Kleinere Änderungen bleiben vorbehalten  
Die farblich angelegte Fläche entspricht den m<sup>2</sup>-Angaben

## Langhagweg 4+6

8047 Zürich

**primobau**  
beraten · planen · bauen

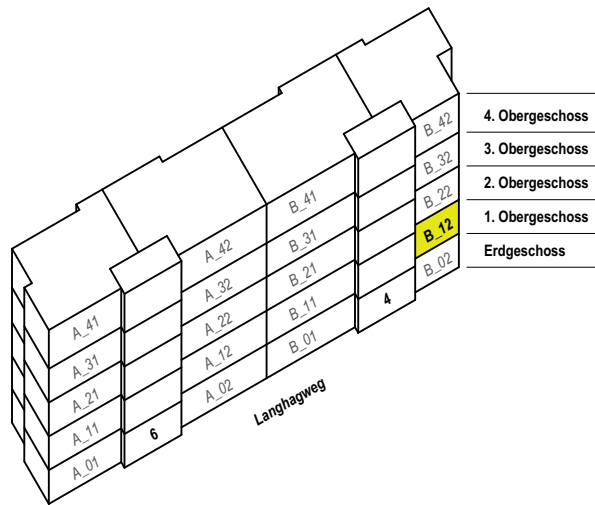


# 3 Zimmer-Wohnung 1.OG B\_12


80.4m<sup>2</sup> + Balkon 7.2m<sup>2</sup>



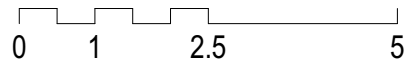
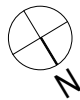
Gemeinnützige Baugenossenschaft Limmattal



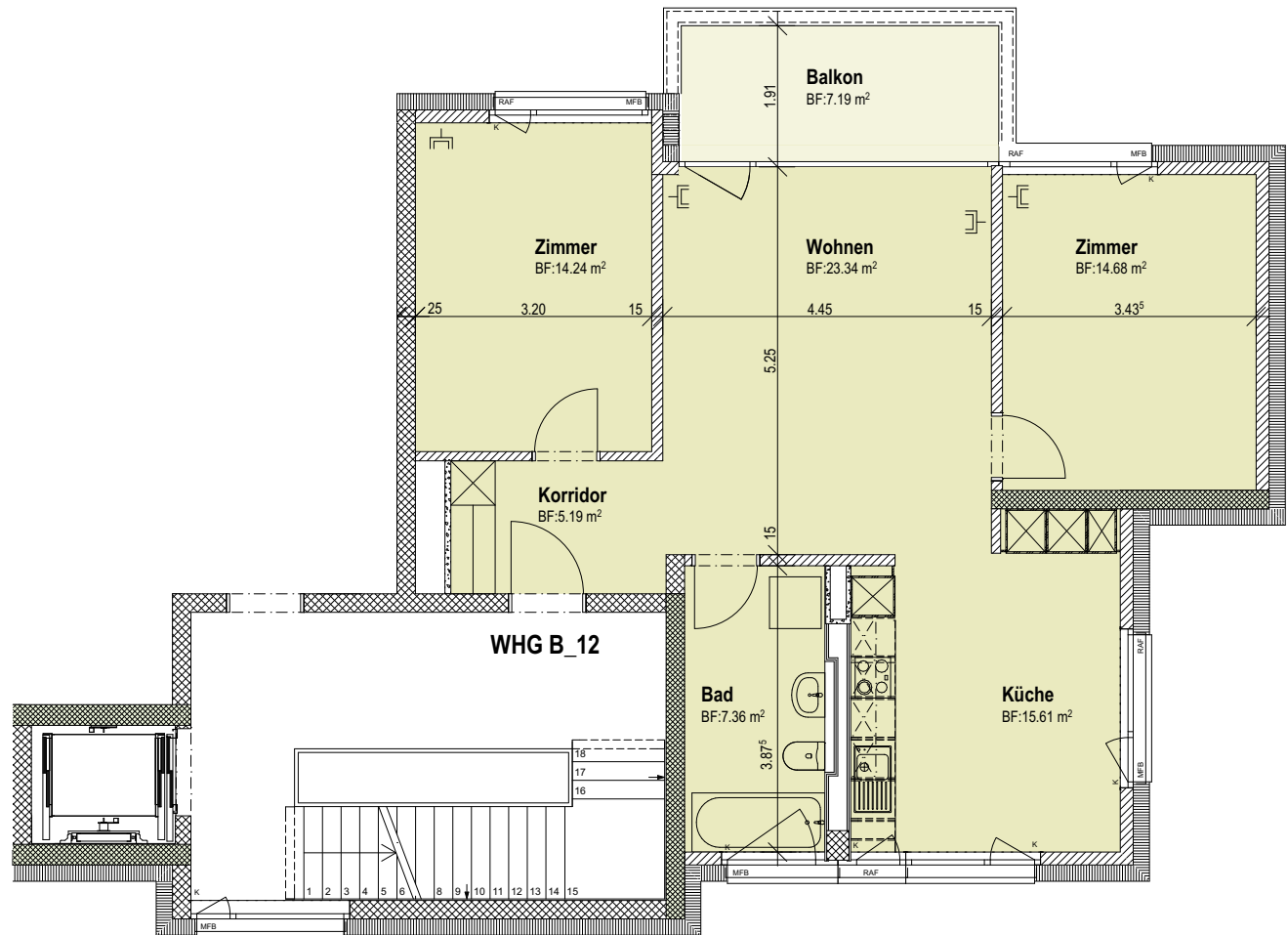
 Beton

 Backstein

 Multimediadose



Kleinere Änderungen bleiben vorbehalten  
Die farblich angelegte Fläche entspricht den m<sup>2</sup>-Angaben



## Langhagweg 4+6

8047 Zürich

**primobau**  
beraten\_planen\_bauweisen

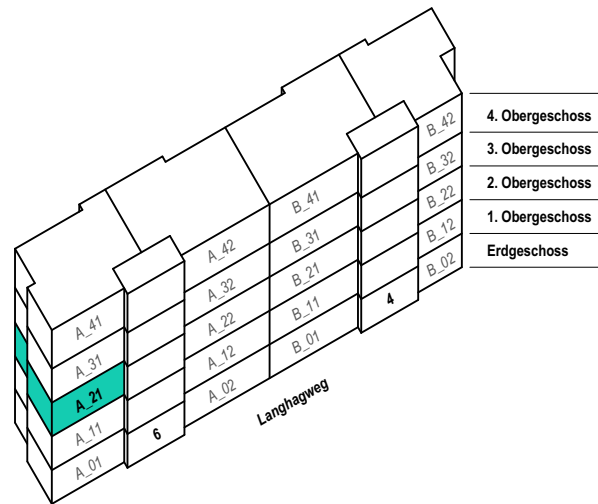





# 4 Zimmer-Wohnung 2.OG A\_21

96.3m<sup>2</sup> + Balkon 7.2m<sup>2</sup>



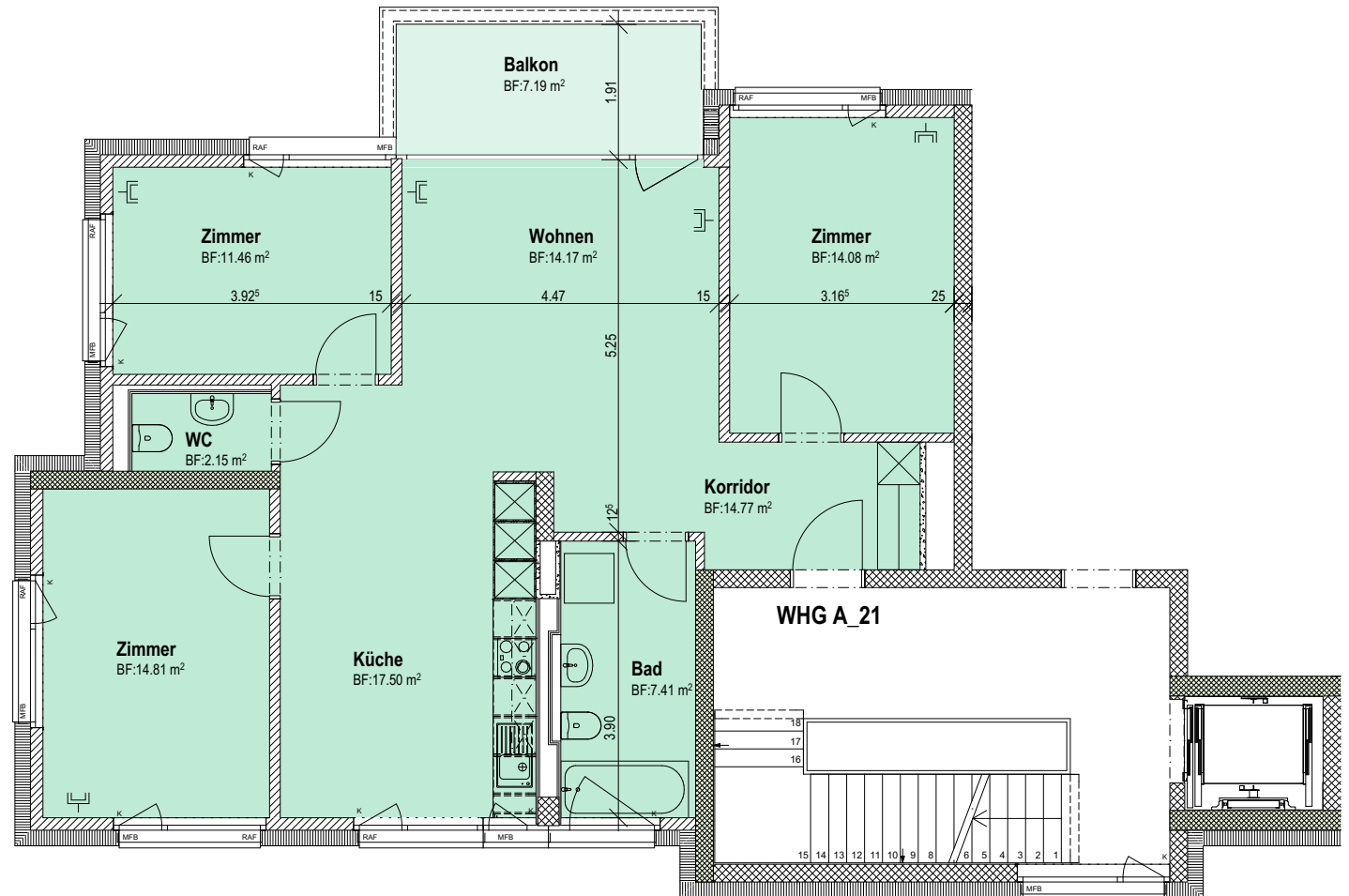
Gemeinnützige Baugenossenschaft Limmattal



-  Beton
-  Backstein
-  Multimediale Dose



Kleinere Änderungen bleiben vorbehalten  
Die farblich angelegte Fläche entspricht den m<sup>2</sup>-Angaben



## Langhagweg 4+6

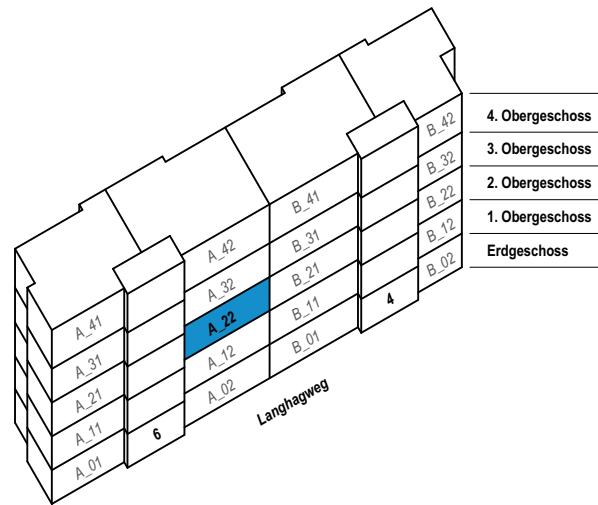
8047 Zürich

# 5 Zimmer-Wohnung 2.OG A\_22

114.8m<sup>2</sup> + Balkon 7.2m<sup>2</sup>



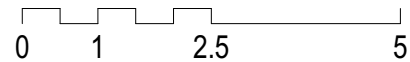
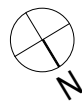
Gemeinnützige Baugenossenschaft Limmattal



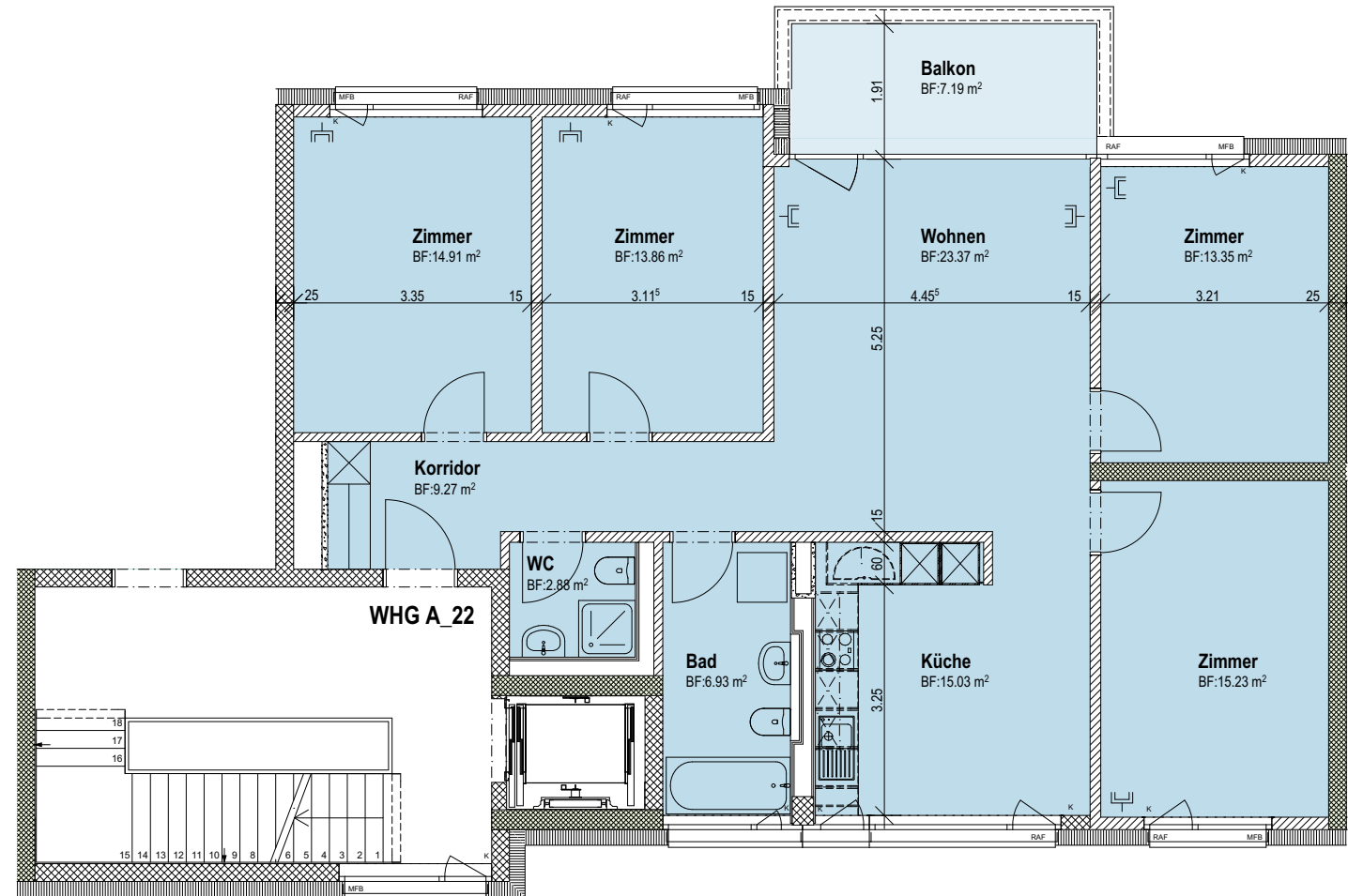
Beton

Backstein

Multimediadose



Kleinere Änderungen bleiben vorbehalten  
Die farblich angelegte Fläche entspricht den m<sup>2</sup>-Angaben



## Langhagweg 4+6

8047 Zürich

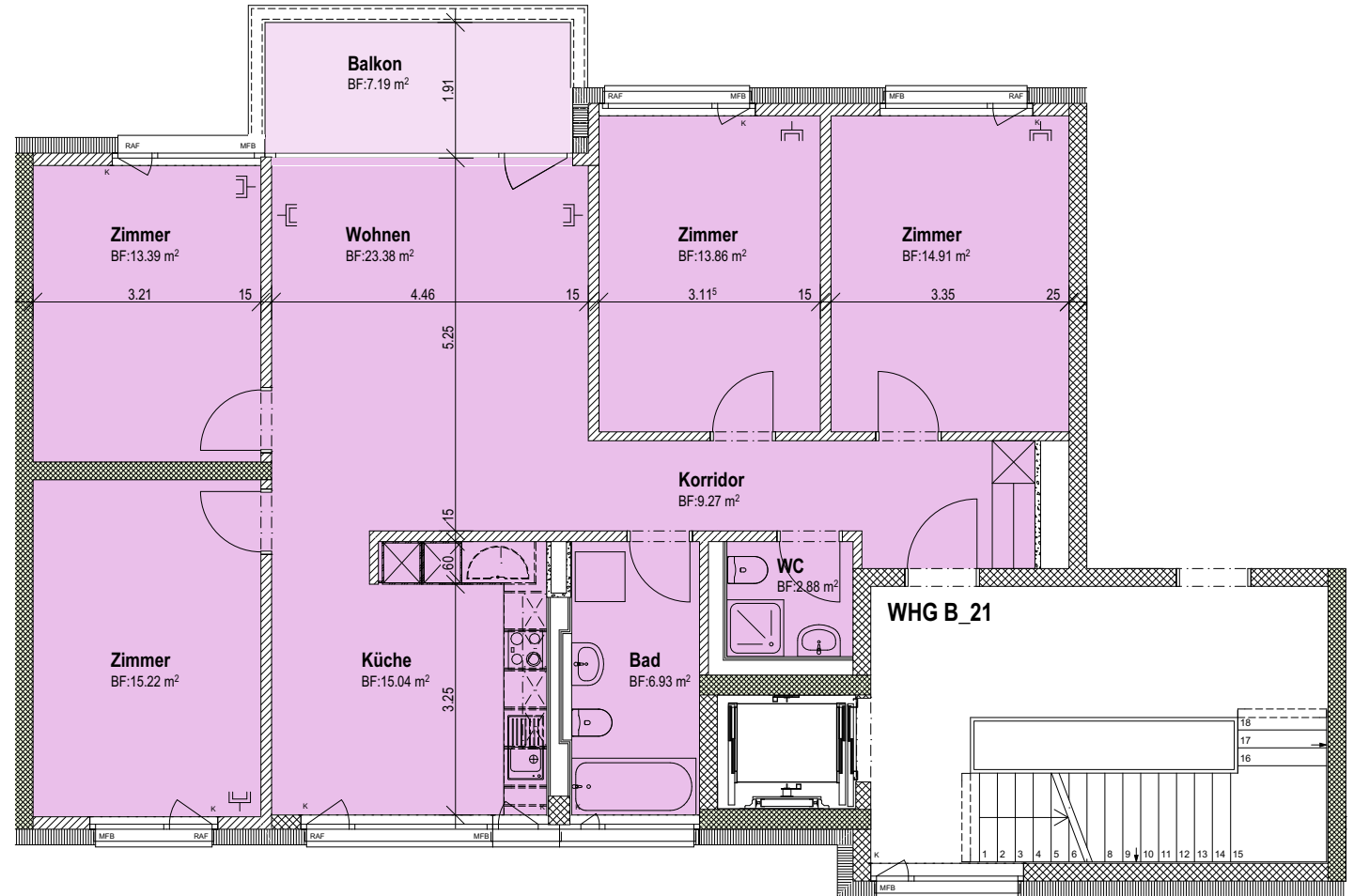
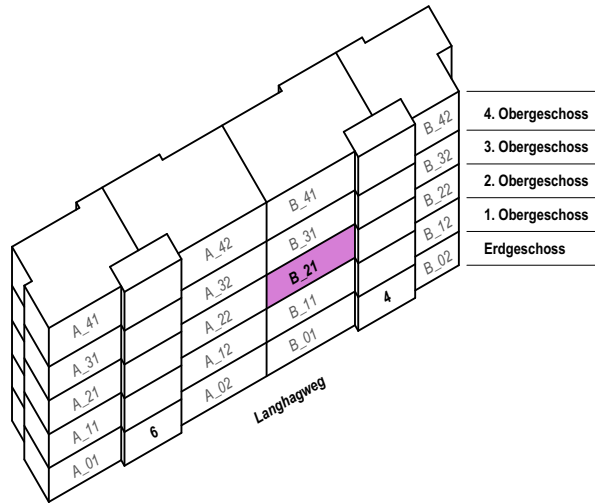
**primobau**  
beraten · planen · bauen

# 5 Zimmer-Wohnung 2.OG B\_21

114.8m<sup>2</sup> + Balkon 7.2m<sup>2</sup>



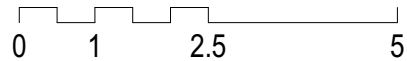
Gemeinnützige Baugenossenschaft Limmattal



Beton

Backstein

Multimediadose



Kleinere Änderungen bleiben vorbehalten  
Die farblich angelegte Fläche entspricht den m<sup>2</sup>-Angaben

## Langhagweg 4+6

8047 Zürich

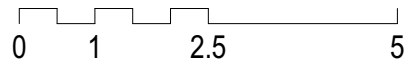
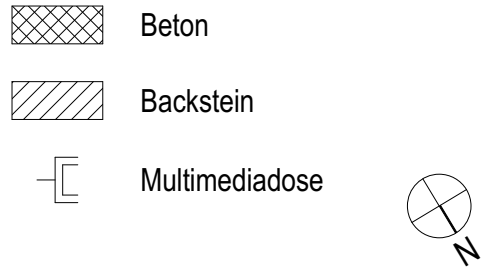
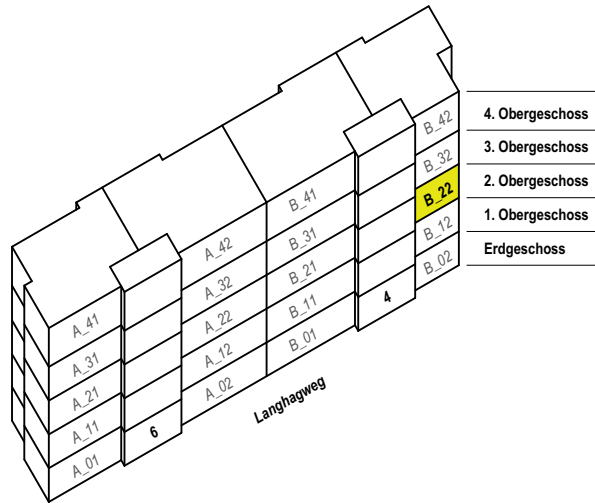
**primobau**  
beraten · planen · bauen

# 3 Zimmer-Wohnung 2.OG B\_22

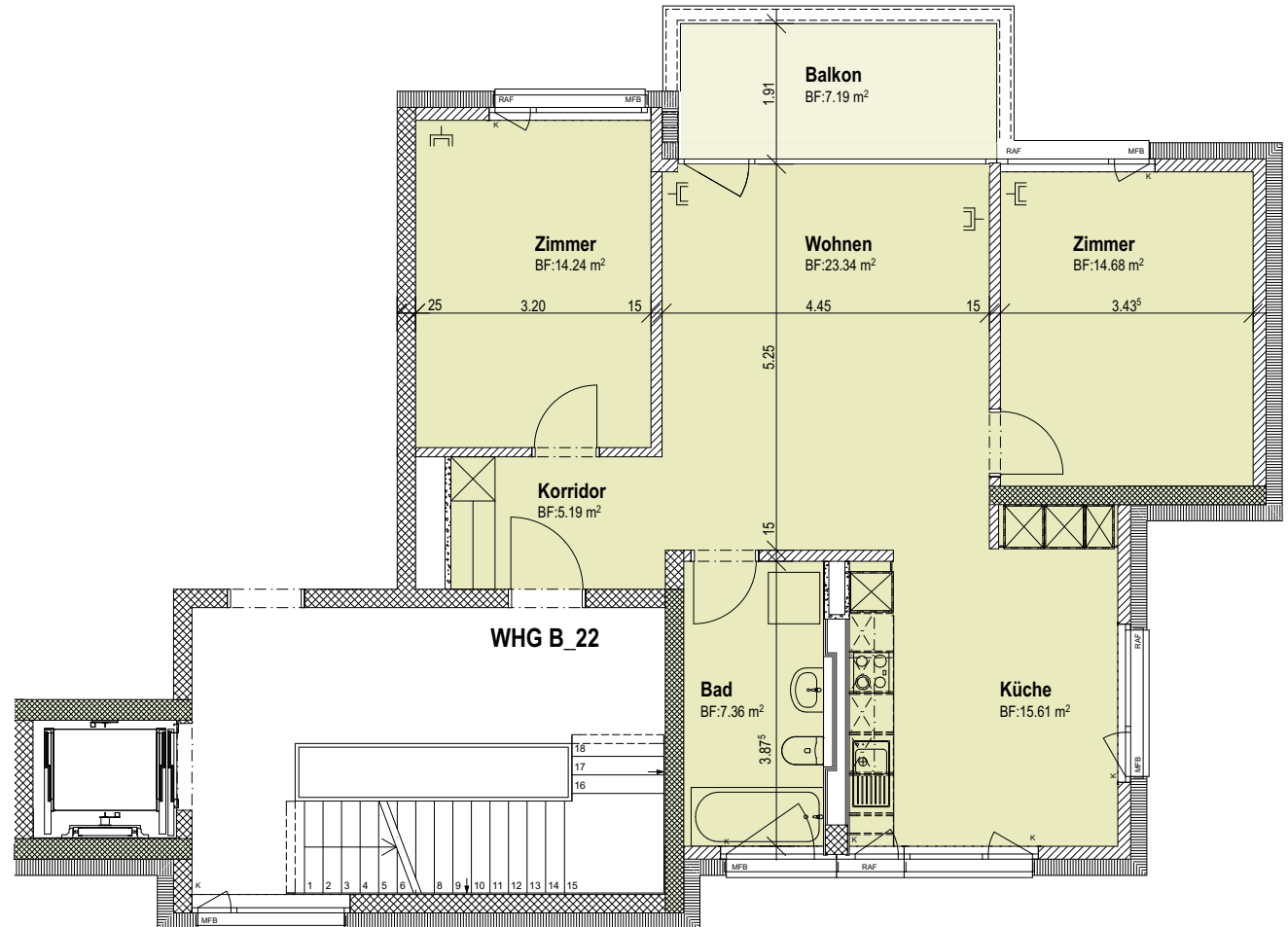
80.4m<sup>2</sup> + Balkon 7.2m<sup>2</sup>



Gemeinnützige Baugenossenschaft Limmattal



Kleinere Änderungen bleiben vorbehalten  
Die farblich angelegte Fläche entspricht den m<sup>2</sup>-Angaben



## Langhagweg 4+6

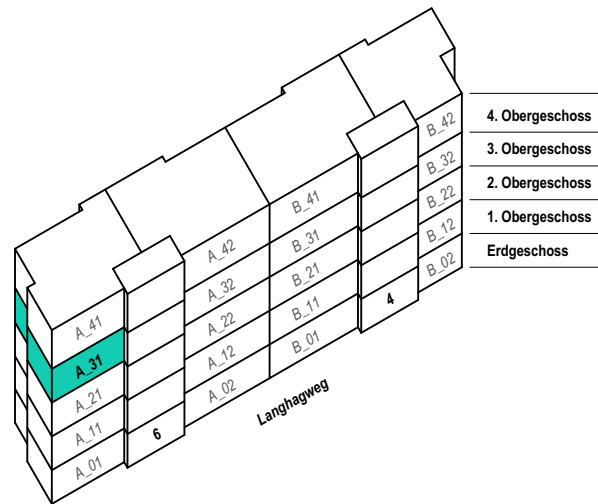
8047 Zürich

# 4 Zimmer-Wohnung 3.OG A\_31

96.3m<sup>2</sup> + Balkon 7.2m<sup>2</sup>



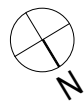
Gemeinnützige Baugenossenschaft Limmattal



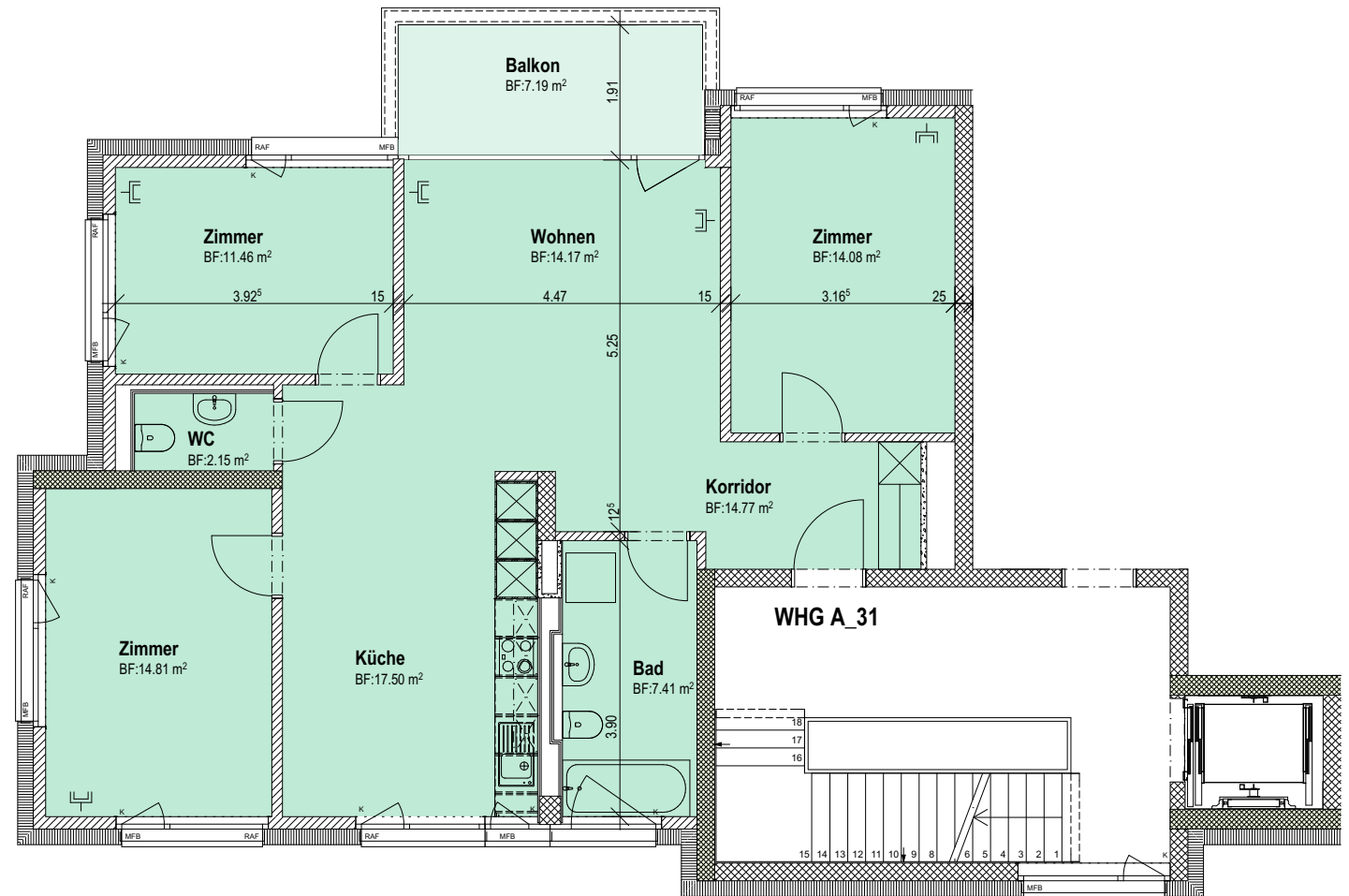
Beton

Backstein

Multimediadosse



Kleinere Änderungen bleiben vorbehalten  
Die farblich angelegte Fläche entspricht den m<sup>2</sup>-Angaben



## Langhagweg 4+6

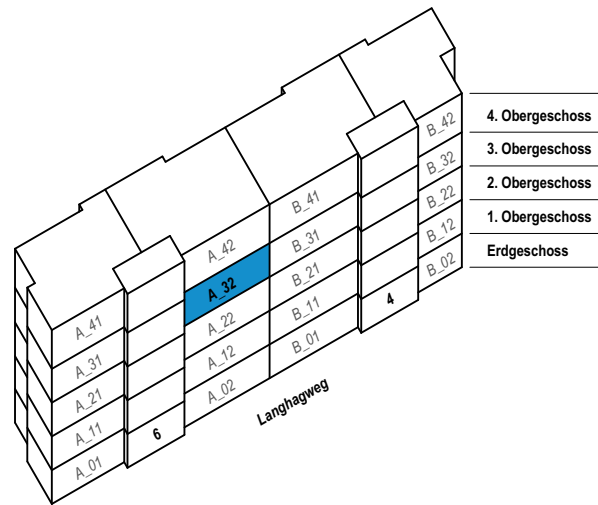
8047 Zürich

# 4 Zimmer-Wohnung 3.OG A\_32

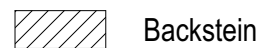
115.6m<sup>2</sup> + Balkon 7.2m<sup>2</sup>



Gemeinnützige Baugenossenschaft Limmattal



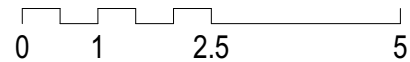
Beton



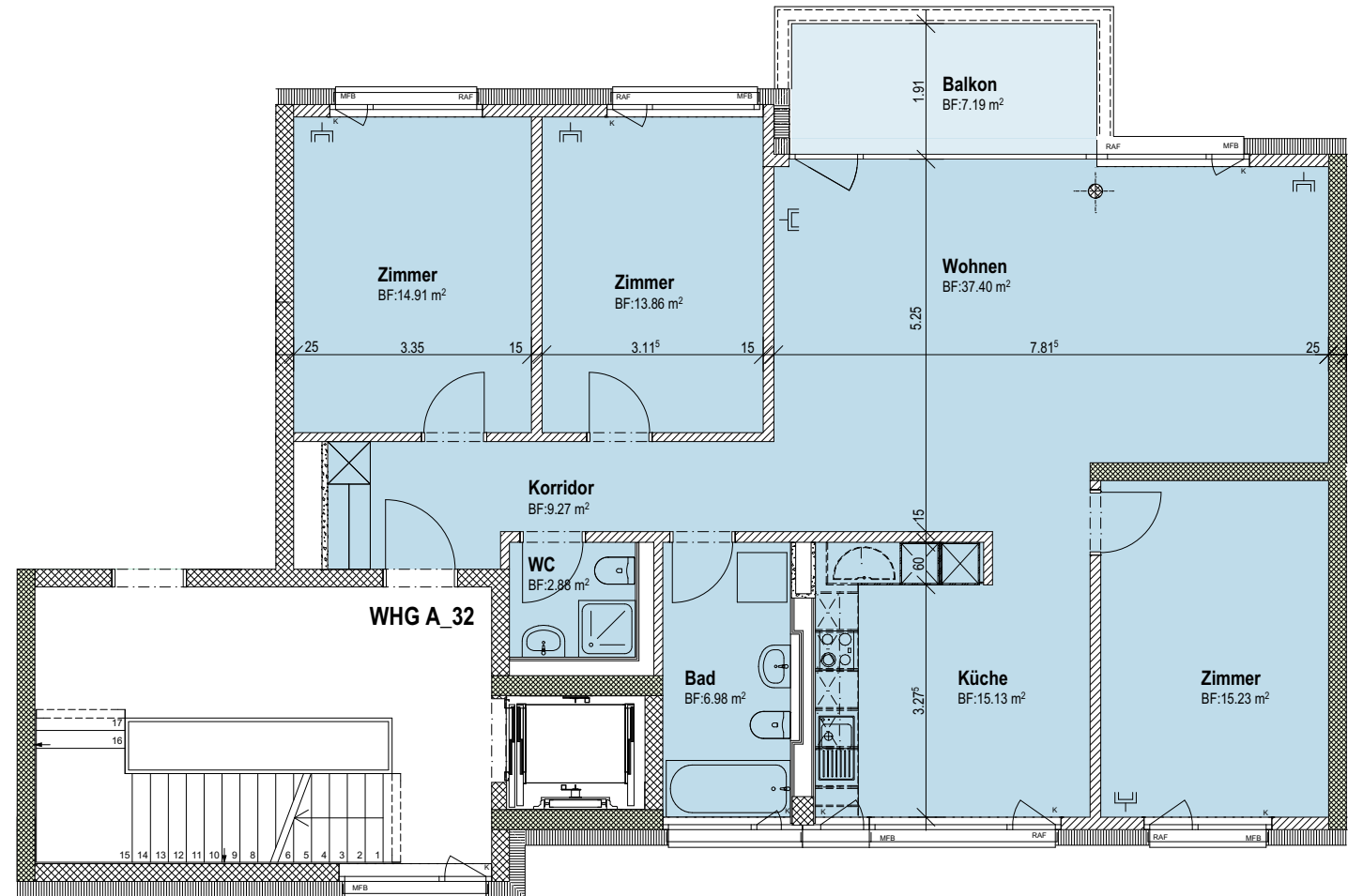
Backstein



Multimediasdose



Kleinere Änderungen bleiben vorbehalten  
Die farblich angelegte Fläche entspricht den m<sup>2</sup>-Angaben



## Langhagweg 4+6

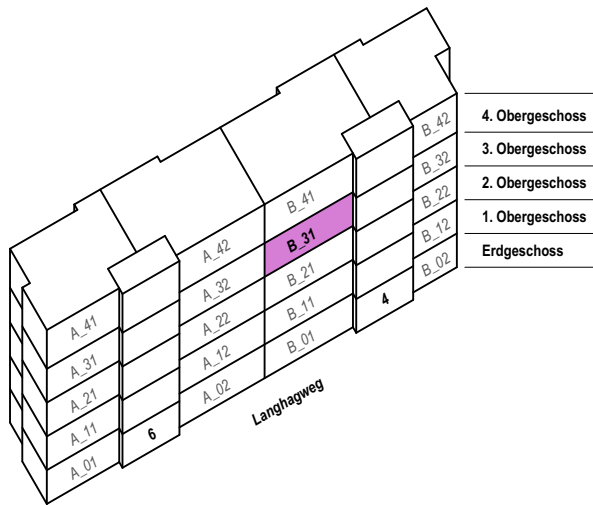
8047 Zürich

# 4 Zimmer-Wohnung 3.OG B\_31

115.6m<sup>2</sup> + Balkon 7.2m<sup>2</sup>



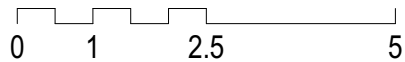
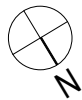
Gemeinnützige Baugenossenschaft Limmattal



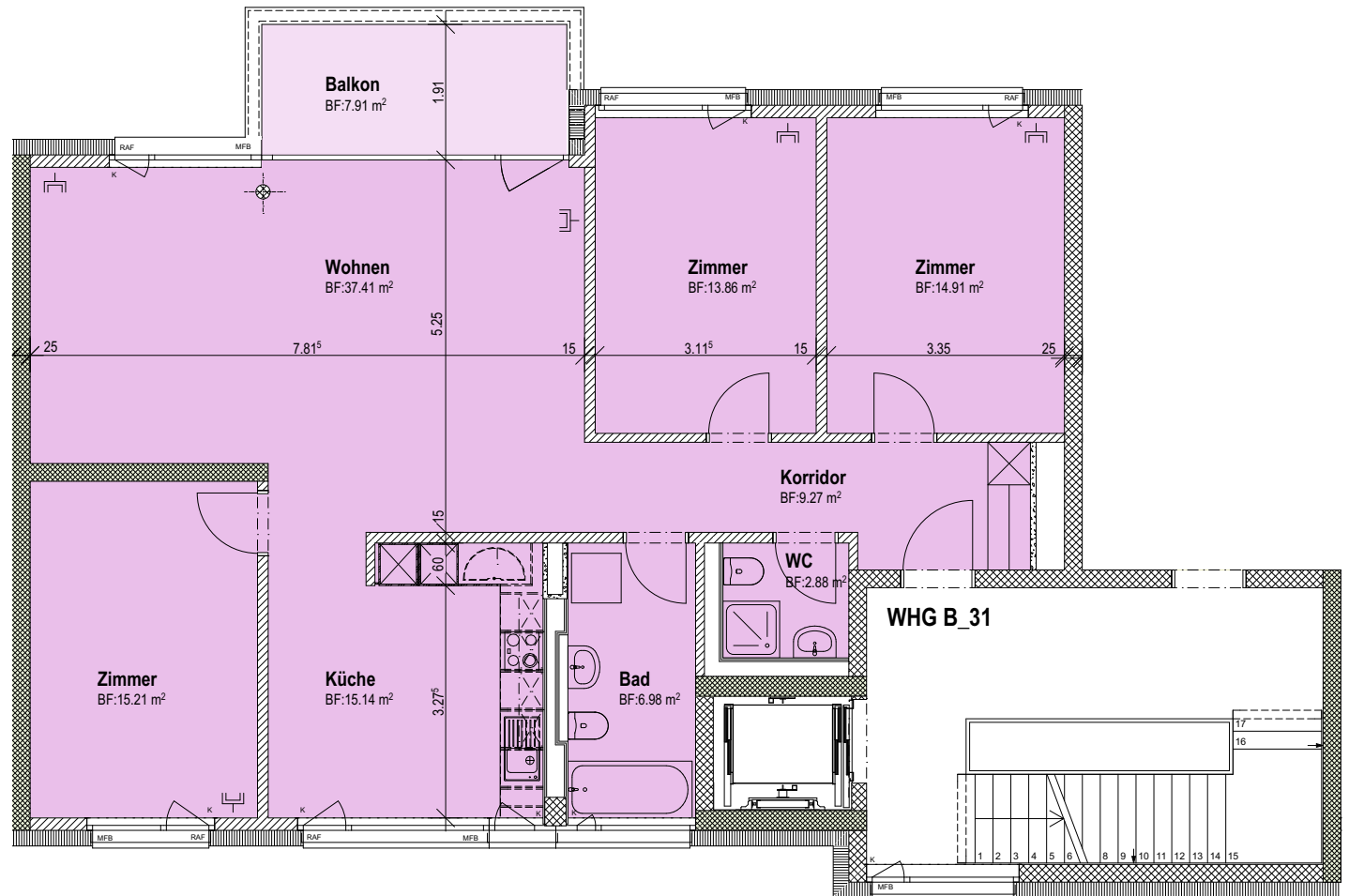
Beton

Backstein

Multimediadose



Kleinere Änderungen bleiben vorbehalten  
Die farblich angelegte Fläche entspricht den m<sup>2</sup>-Angaben



## Langhagweg 4+6

8047 Zürich

**primobau**  
beraten\_planen\_bauweisen

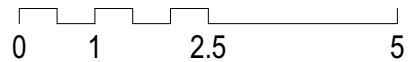
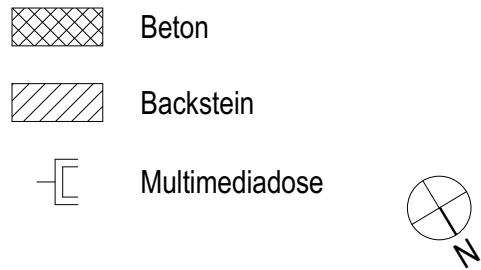
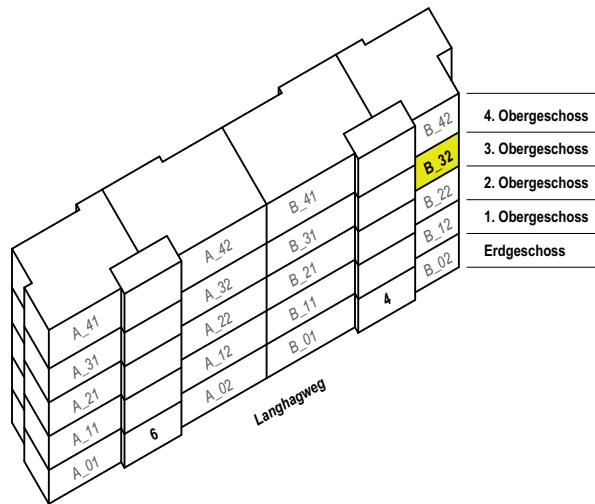


# 3 Zimmer-Wohnung 3.OG B\_32

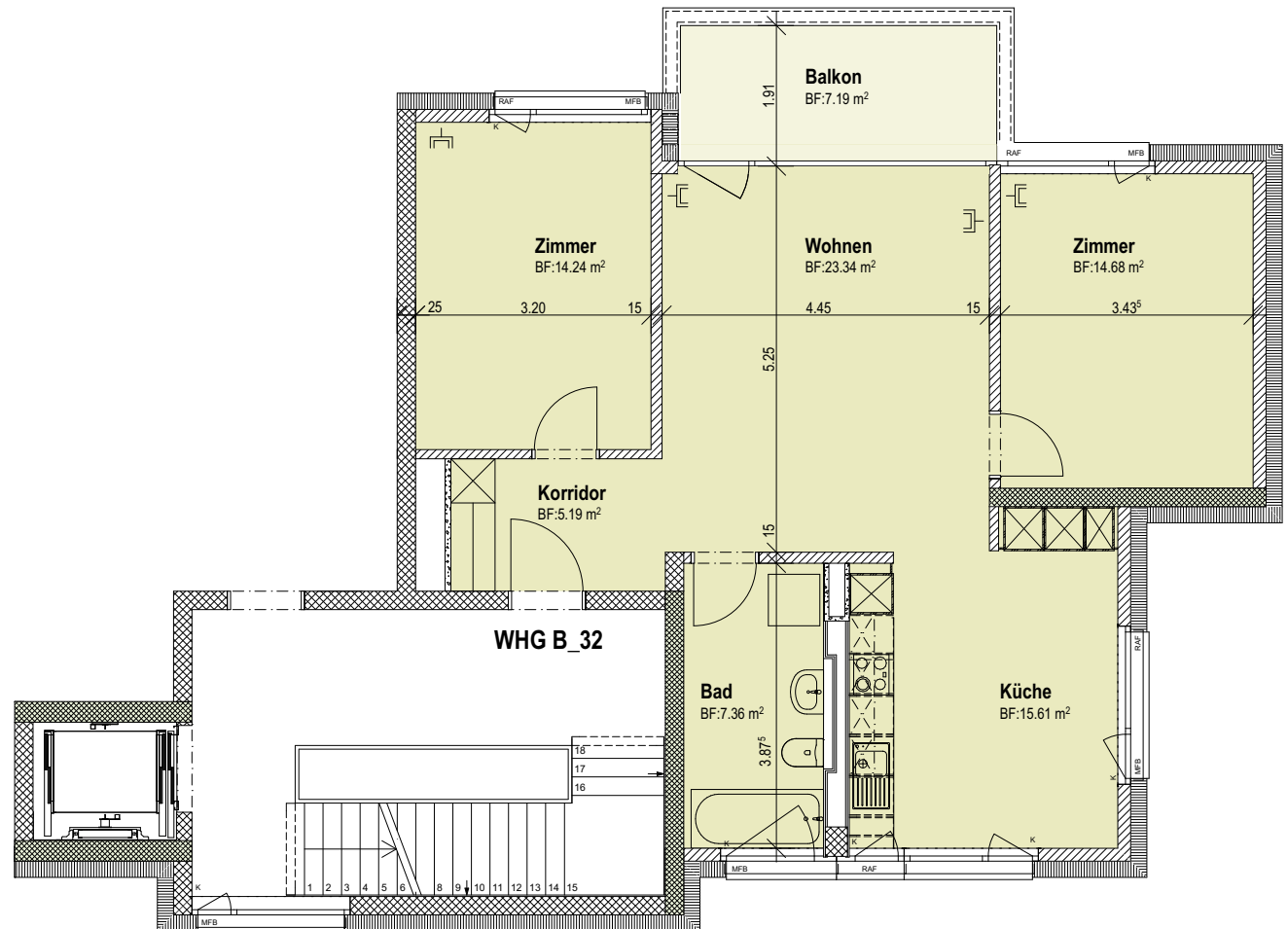
80.4m<sup>2</sup> + Balkon 7.2m<sup>2</sup>



Gemeinnützige Baugenossenschaft Limmattal



Kleinere Änderungen bleiben vorbehalten  
Die farblich angelegte Fläche entspricht den m<sup>2</sup>-Angaben



## Langhagweg 4+6

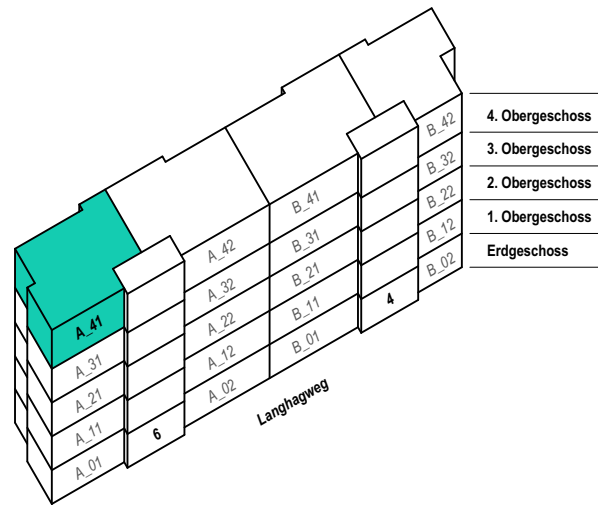
8047 Zürich

# 4 Zimmer-Wohnung 4.OG A\_41

96.3m<sup>2</sup> + Balkon 7.2m<sup>2</sup>



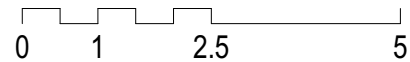
Gemeinnützige Baugenossenschaft Limmattal



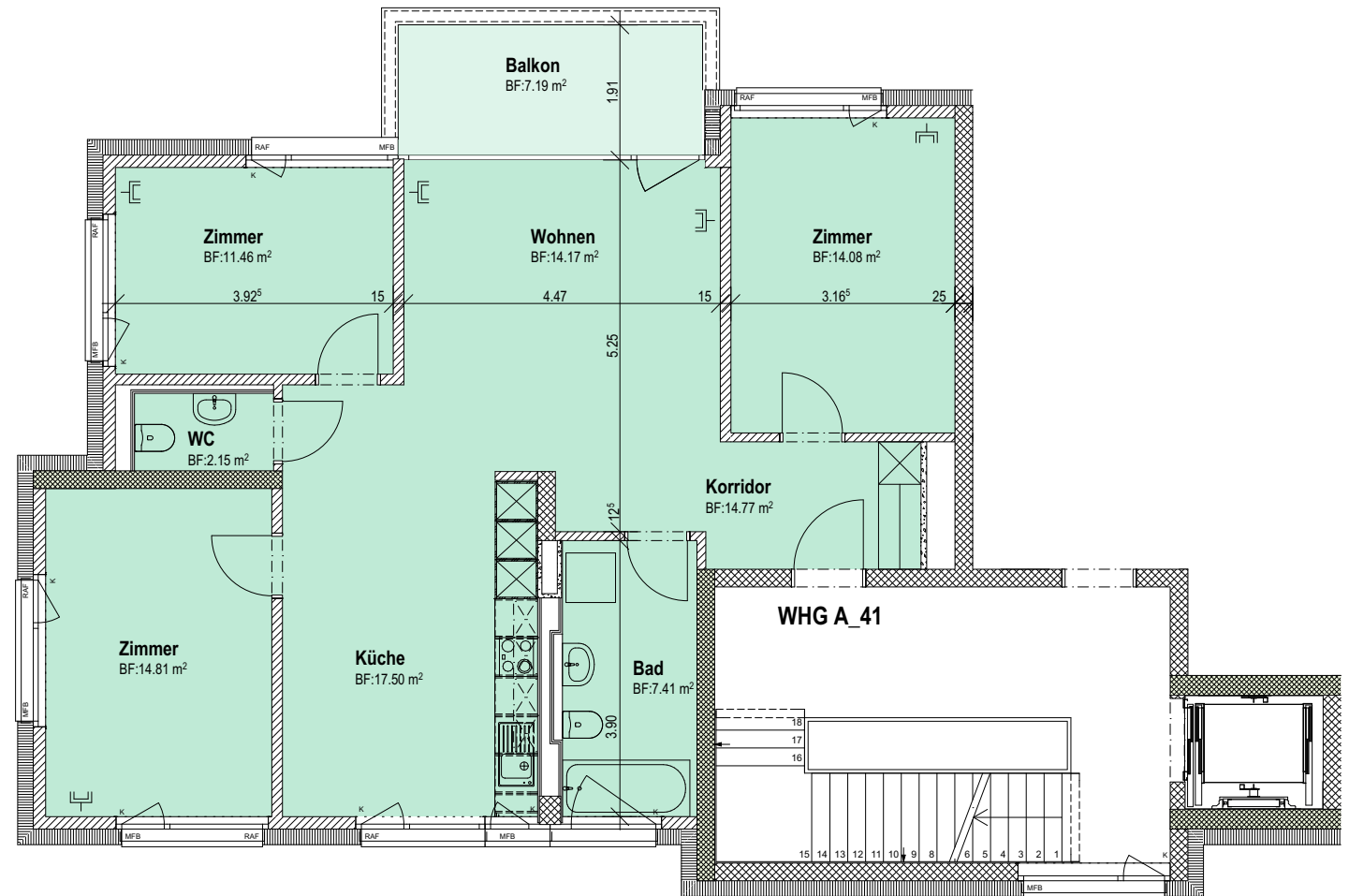
Beton

Backstein

Multimediadosse



Kleinere Änderungen bleiben vorbehalten  
Die farblich angelegte Fläche entspricht den m<sup>2</sup>-Angaben



## Langhagweg 4+6

8047 Zürich

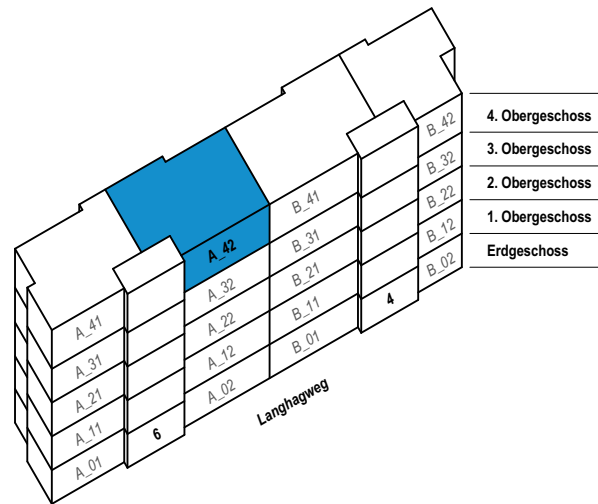
**primobau**  
beraten · planen · bauen

# 4 Zimmer-Wohnung 4.OG A\_42

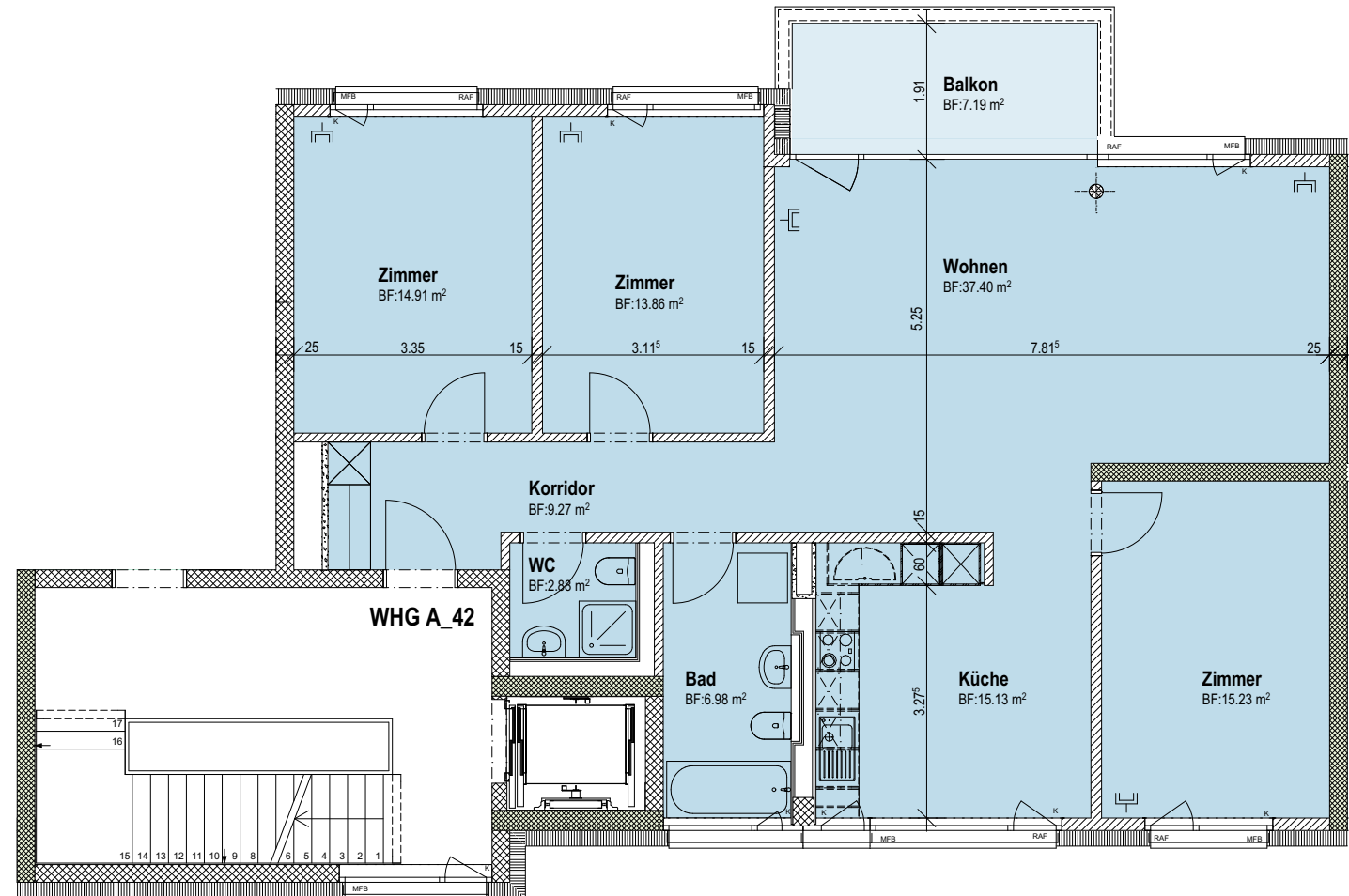
115.6m<sup>2</sup> + Balkon 7.2m<sup>2</sup>



Gemeinnützige Baugenossenschaft Limmattal



Kleinere Änderungen bleiben vorbehalten  
Die farblich angelegte Fläche entspricht den m<sup>2</sup>-Angaben



## Langhagweg 4+6

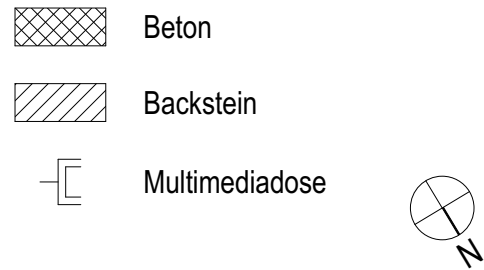
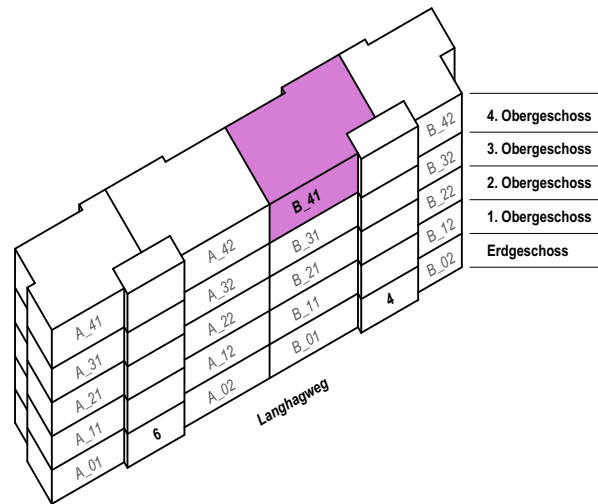
8047 Zürich

# 4 Zimmer-Wohnung 4.OG B\_41

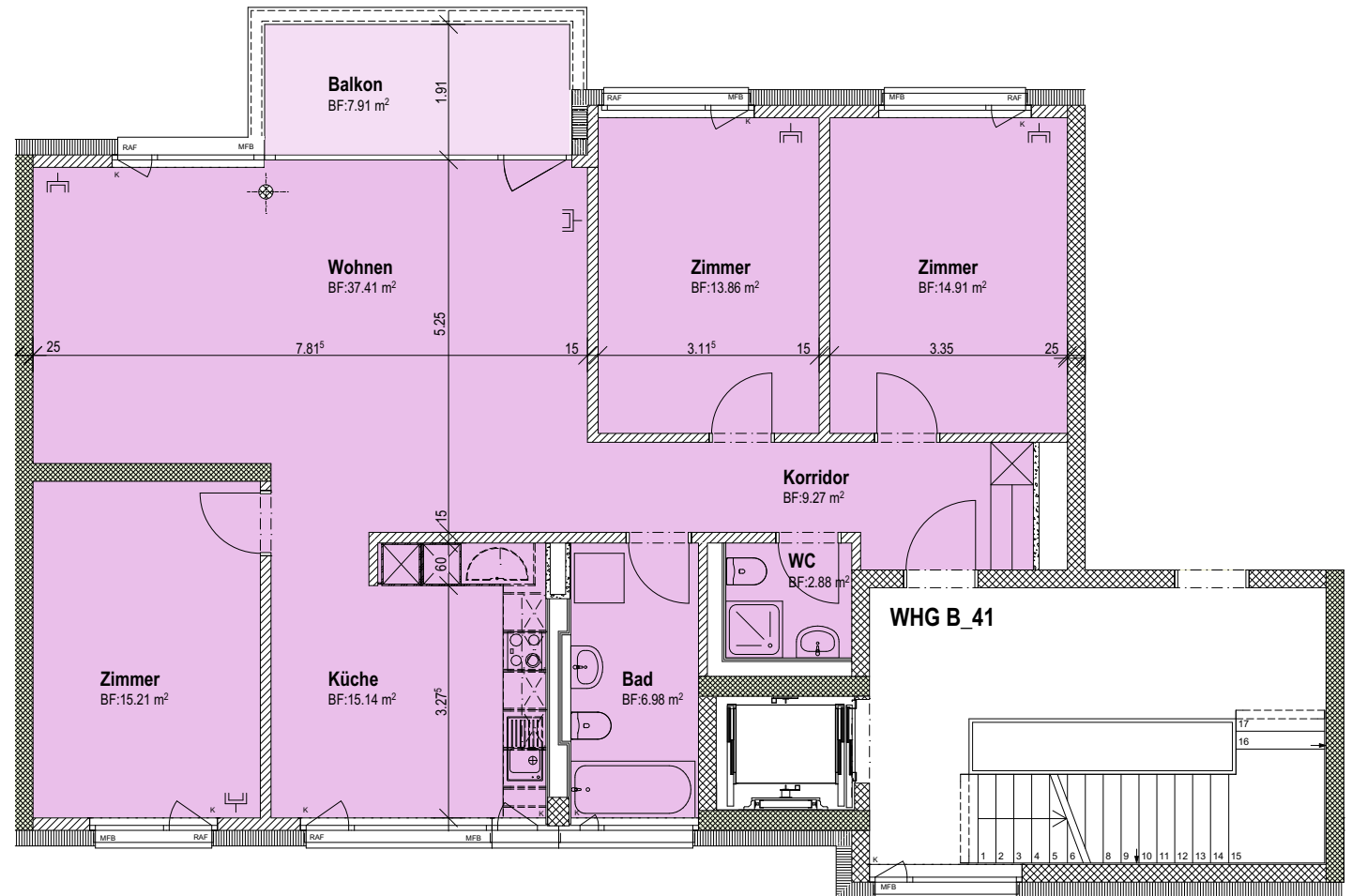
115.6m<sup>2</sup> + Balkon 7.2m<sup>2</sup>



Gemeinnützige Baugenossenschaft Limmattal



Kleinere Änderungen bleiben vorbehalten  
Die farblich angelegte Fläche entspricht den m<sup>2</sup>-Angaben



Langhagweg 4+6

8047 Zürich

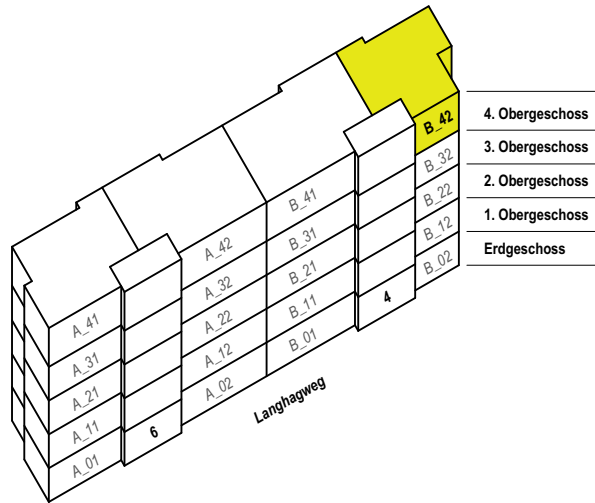
primobau  
beraten\_planen\_bauweisen

# 3 Zimmer-Wohnung 4.OG B\_42

80.4m<sup>2</sup> + Balkon 7.2m<sup>2</sup>



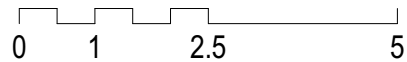
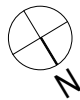
Gemeinnützige Baugenossenschaft Limmattal



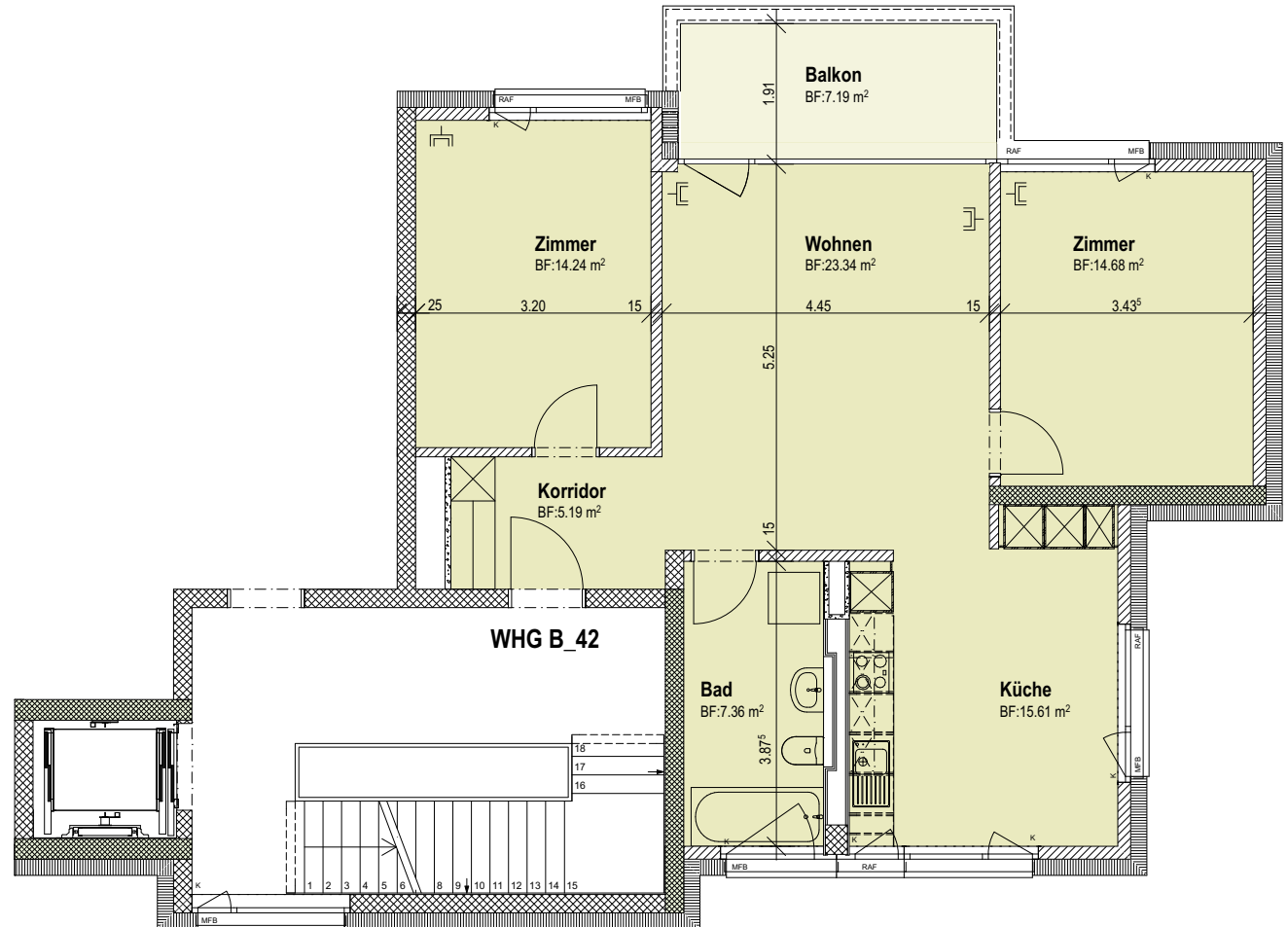
Beton

Backstein

Multimediadose



Kleinere Änderungen bleiben vorbehalten  
Die farblich angelegte Fläche entspricht den m<sup>2</sup>-Angaben



## Langhagweg 4+6

8047 Zürich

**primobau**  
beraten\_planen\_bauleiten